

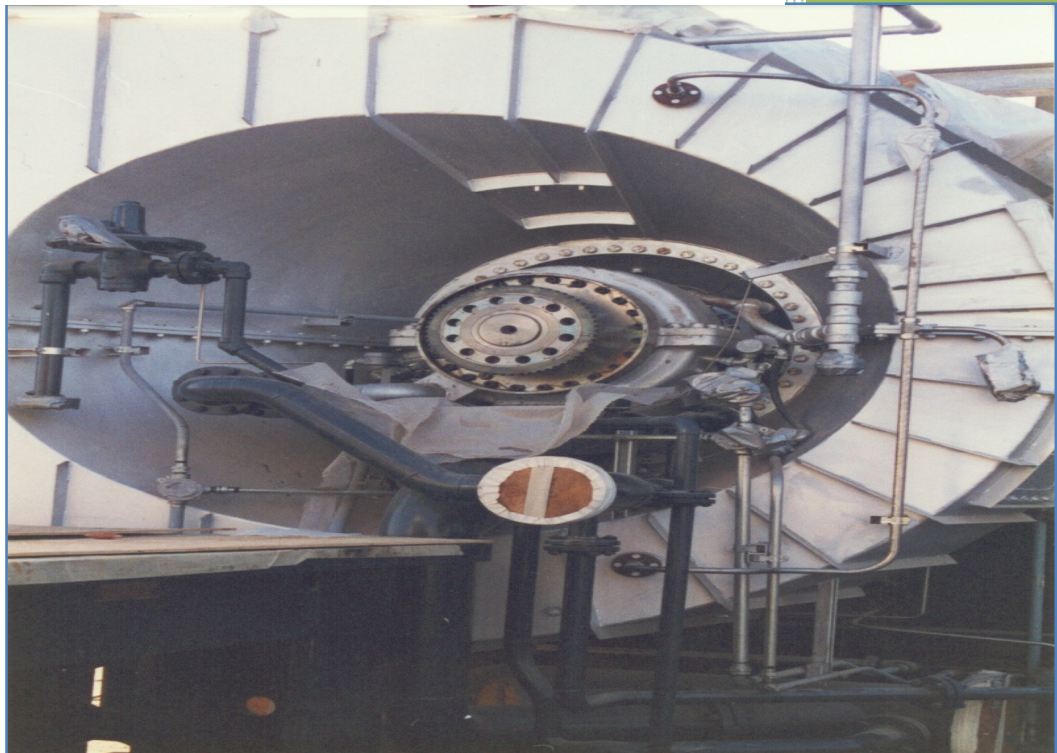


PROJECTS PROFILE

ENGINEERS

CONTRACTORS

CONSULTANTS



Excellence is our Performance

AMS Power & Industrial Engineering (Private) Limited

1-C Canal Park, Gulberg-II, Lahore.

www.amspower.com.pk Email: amsp@brain.net.pk

Ph: +92 42 35959051-53 Fax: +92 42 35959050



POWER & Industrial Engineering (Private) Limited.

Over the years, AMS-Power has taken on industrial construction and fabrication projects of all sizes and scopes.

This catalogue provides a detailed insight into all of those projects.

In addition to lists of in-hand and recent projects, we also provide here lists of projects executed in the past, divided under Electrical, Mechanical and Instrumentation sections.

The last part of this document provides detailed scope of work for every project executed by AMS-Power. This includes activities like erection of equipment, fabrication of steel structure, tanks & vessels, piping, insulation, HVAC, painting, electrical and Instrumentation.



Table of Contents

<i>Projects Executed</i> _____	7
Projects in Hand	9
Recent Projects.....	10
List of Mechanical Works Completed.....	17
List of Electrical Works Completed	24
List of Instrumentation Works Completed	28
<i>Detailed Scope of Work</i> _____	31
Scope of Work - Major Projects Executed	32



POWER & Industrial Engineering (Private) Limited.

Projects Executed

Projects in Hand

SN	Work / Job Description	Location	Client
1.	MANUFACTURING, FABRICATION & SUPPLYING OF PROCESS EQUIPMENT RELATED TO PROJECT – 1319 MEHRAN PLANT, KOTRI, HYDERABAD	AMS-Power Works, Lahore.	Rafhan Maize Product Company Ltd., Faisalabad

Recent Projects

Complete Power Generation Plant (Plant Equipment, Piping System – Fabrication and Erection)	
Year	2009-2010
Client	Liberty Power Tech Ltd. (LPTL)
Engines	<ul style="list-style-type: none"> • 11x16.5 MW Wärtsilä Gensets • 1x16.5 MW Steam Turbine Generator
Status	Completed
Scope of Work	
Mechanical	<p><i>Mechanical Erection of 11x16.5MW (W18V46) Gensets & 1x16.5MW Steam Turbine Generator.</i></p> <ul style="list-style-type: none"> • Unloading from trailers and shifting to their respective foundations. • Assembling the Engines & Alternator. • Skid lowering of their spring blocks by aligning & leveling, to their centerline both X & Y axis-wise & finally alignment of Engines & Alternators. <p><i>Mechanical Erection and Piping work of 11x16.5MW (W18V46) Gensets & 1x16.5MW Steam Turbine Generator.</i></p> <ul style="list-style-type: none"> • Main Equipment Erection Engine Generator Sets - 11 Nos., Exhaust Gas Boilers - 11 Nos., Steam Turbine Generator - 1 No. • Auxiliary Equipment / Modules All types of Auxiliary Equipment related to the above main equipment: Engine Auxiliary Module, Trunk Route Pipe Rack inside Power House, all other Auxiliary Modules. • Plant Systems HFO System, LFO System, Sludge System, Lube Oil System, Compressed Air System, Cooling System, Inlet Air System, Exhaust Gas System, Heat Recovery System, Fire Fighting System, Water Supply System, Emission Measuring System. • Ventilation Systems Engine Hall, Auxiliary Area, Outlet Ventilation. • Platforms Engine Platform, Auxiliary Platform, Tank Yard Platform, Other Platforms. • Steel Structure Erection work, supplied as pre-fabricated for various systems described above.



POWER & Industrial Engineering (Private) Limited.

	<ul style="list-style-type: none">• Piping & Pipe Supports For all Plant Systems described above (Fabrication & Erection), Exhaust Gas System Duct (Fabrication & Erection), Pipe Supports supplied as prefabricated.• Steam Tracing HFO & Sludge systems only.• Pickling Of Pipes HFO, LFO & Lube Oil systems.• Pressure Tests All pipe systems (excluding Inlet Air System & Exhaust Gas System)
--	---

Construction/Installation of Feeder Line

Year	2009
Client	Pakistan Petroleum Ltd.
Status	Completed

Scope of Work

Mechanical	<p><i>Construction of 5KM 6" dia Underground Feeder line for Adhi-18 Well in accordance with API standard 1104/ASME B21.8/ASME B31.4</i></p> <ul style="list-style-type: none">• Laying of 6" dia High Pressure line complete with welding/installation of above ground feeder line sections at wellhead and tie-in points, coating and wrapping of buried line including painting of above surface fitting/lines• Construction/Welding of various sizes spools/nipples complete with installation of fitting, valves and painting etc. at wellhead.• Hydrostatic testing and Pigging• Excavation & Back-filling
-------------------	---

Complete Power Generation Plant (Plant Equipment, Piping System – Fabrication and Erection)	
Year	2008-2010
Client	Nishat Power Generation Ltd. (NPL)
Engines	<ul style="list-style-type: none"> • 11x16.5 MW Wärtsilä Gensets • 1x16.5 MW Steam Turbine Generator
Status	Completed
Scope of Work	
Mechanical	<p><i>Mechanical Erection of 11x16.5MW (W18V46) Gensets & 1x16.5MW Steam Turbine Generator.</i></p> <ul style="list-style-type: none"> • Unloading from trailers and shifting to their respective foundations. • Assembling the Engines & Alternator. • Skid lowering of their spring blocks by aligning & leveling, to their centerline both X & Y axis-wise & finally alignment of Engines & Alternators. <p><i>Mechanical Erection and Piping work of 11x16.5MW (W18V46) Gensets & 1x16.5MW Steam Turbine Generator.</i></p> <ul style="list-style-type: none"> • Main Equipment Erection Engine Generator Sets - 11 Nos., Exhaust Gas Boilers - 11 Nos., Steam Turbine Generator - 1 No. • Auxiliary Equipment / Modules All types of Auxiliary Equipment related to the above main equipment: Engine Auxiliary Module, Trunk Route Pipe Rack inside Power House, all other Auxiliary Modules. • Plant Systems HFO System, LFO System, Sludge System, Lube Oil System, Compressed Air System, Cooling System, Inlet Air System, Exhaust Gas System, Heat Recovery System, Fire Fighting System, Water Supply System, Emission Measuring System. • Ventilation Systems Engine Hall, Auxiliary Area, Outlet Ventilation. • Platforms Engine Platform, Auxiliary Platform, Tank Yard Platform, Other Platforms. • Steel Structure Erection work, supplied as pre-fabricated for various systems described above. • Piping & Pipe Supports For all Plant Systems described above (Fabrication & Erection), Exhaust Gas System Duct (Fabrication & Erection), Pipe Supports supplied as prefabricated.

	<ul style="list-style-type: none"> • Steam Tracing HFO & Sludge systems only. • Pickling Of Pipes HFO, LFO & Lube Oil systems. • Pressure Tests All pipe systems (excluding Inlet Air System & Exhaust Gas System)
--	--

HVAC System, Insulation/Cladding & Painting works

Year	2009
Client	Nishat Power Ltd.
Status	Completed

Scope of Work

HVAC WORKS	<p><i>Installation of HVAC System (Ventilation & AC), Insulation work of 11 Nos. Boilers and complete paint work including touch ups</i></p> <ul style="list-style-type: none"> • HVAC work for Workshop & Warehouse, Administrative Building, Utility Block (Control room offices, Electrical room, Switchgear Room & Starting Room), Fuel Treatment house and Guard House. • Complete Insulation and Cladding work of HFO Tanks & pipes, Sludge Tanks & pipes, Exhaust System, Steam System – Including 11 Nos. Boilers • Paint work of HFO, LFO, Sludge, Lube Oil, Compressed Air, Cooling, Inlet Air, Exhaust gas, Steam, Fire Fighting, Water Treatment and Emission Control Systems covering piping as well as structure
-------------------	---

Complete Plant Electrical and Equipment Erection

Year	2007-08
Client	Attock Generation Ltd.
Engines	<ul style="list-style-type: none"> • 9x16.5 MW Wärtsilä Gensets • 1x16.5 MW Steam Turbine Generator
Status	Completed

Scope of Work

Mechanical	<p><i>Mechanical Erection of 9x16.5MW (W18V46) Gensets & 1x16.5MW Steam Turbine Generator.</i></p> <ul style="list-style-type: none"> • Unloading from trailers and shifting to their respective foundations. • Assembling the Engines & Alternator.
-------------------	--



POWER & Industrial Engineering (Private) Limited.

	<ul style="list-style-type: none"> • Skid lowering of their spring blocks by aligning & leveling, to their centerline both X & Y axis-wise & finally alignment of Engines & Alternators.
Electrical	<p>Complete Plant Electrical Installations of 9x16.5 MW Genset Units & 1x16.5MW Steam Turbine Generator</p> <ul style="list-style-type: none"> • MV & LV Switchgears, Auxiliary Transformers, Control Panels, Power & Control Cabling, Lighting, Earthing, Lightning protection & Fire Protection, HVAC, Black Start System. • Assembling & erection of Step-up transformers 11 KV / 132K - 3 Units & 3x2500 KVA Auxiliary Transformers. • High Voltage Switchyard main equipment, steel structures, protection, control & supervision. • Heat Recovery System – 9 Units. • Steam Turbine Generator – 1 Unit & auxiliary equipment. • Testing & pre-commissioning and providing assistance during commissioning.

Turnkey Mechanical project

Year	2007
Client	Maple Leaf Cement Factory Ltd.
Status	Completed

Scope of Work

Mechanical	<p>Fabrication & Erection of Pre-Filteration System</p> <ul style="list-style-type: none"> • Supply of Material and equipment • Fabrication of Filters & Moisture Separators, Dish ends, Flanges, Gas Pipeline • Erection of complete unit
-------------------	--

Complete Plant Electrification & Commissioning Assistance

Year	2006-2007
Client	D.G. Khan Cement Co. Ltd., Khairpur
Engines	2x16.5 MW Wärtsilä Gensets
Status	Completed

Scope of Work

Mechanical	<ul style="list-style-type: none"> • 2x16.5 MW Wärtsilä Gensets HFO/LFO operated, complete fabrication & erection of Mechanical Equipment, Piping, Steel Structure, Insulation & Painting works etc.
-------------------	---



POWER & Industrial Engineering (Private) Limited.

Electrical	<ul style="list-style-type: none">Complete plant electrification, including MV & LV Switchgears & Transformers, Control Panels, MV&LV Power & Control Cabling, Lighting, Lightning protection & Fire Protection system and earthing work, including electrical heat tracing.
Commissioning	Providing commissioning assistance.

Construction of 6" Dia underground Feeder line

Year	2007
Client	Pakistan Petroleum Ltd.
Status	Completed

Scope of Work

Mechanical	<p><i>Construction of 2.5 KM 6" dia Underground Feeder line for ADHI-18 including piping works for tie-in connections near ADHI-7 and ADHI-13 well</i></p> <ul style="list-style-type: none">Laying of 6" dia High Pressure line complete with welding/installation of above ground feeder line sections at wellhead and tie-in points, coat and wrap of buried line including painting of above surface fitting/linesConstruction/Welding of various sizes spools/nipples complete with installation of fitting, valves and painting etc. at wellhead.Replacement of ADHI-10 and re-routing of ADHI-9 feeder lines. Approximate length of 3KM.Excavation & Back-filling
-------------------	---

Installation of Equipment, Structure, Piping(Fabrication & Erection) and complete Plant Electrification

Year	2006-2007
Client	Nestle Pakistan Ltd., Kabirwala
Engines	1x6.5 MW Wärtsilä Gensets
Status	Completed

Scope of Work

Mechanical	<ul style="list-style-type: none">1x6.5 MW Genset Wärtsilä, HFO / LFO operatedHeat Recovery Steam Generator.Complete installation of the Power Plant equipment, steel structure & Plant piping fabrication and erection, Insulation & Painting works etc.
-------------------	---



POWER & Industrial Engineering (Private) Limited.

Electrical	<ul style="list-style-type: none">• Complete plant electrification, including MV & LV Switchgears & Transformers, Control Panels, MV&LV Power & Control Cabling, Lighting, Lightning protection & Fire Protection system and earthing work, including electrical heat tracing.
-------------------	--

Construction and Erection for AMI Project

Year	2006
Client	ICI Pakistan Ltd.
Status	Completed

Scope of Work

Mechanical	Mechanical Construction, Erection works of Asset Modernization & Improvement Project at ICI Polyester Fiber, Sheikhpura. <ul style="list-style-type: none">• Equipment erection• Related Piping• Related Insulation & Cladding
-------------------	---

Fabrication & Erection of Mechanical Equipment and Plant Electrification

Year	2005-2006
Client	Gharibwal Cement Ltd., Gharibwal
Engines	2x6.0 MW Wärtsilä Gensets
Status	Completed

Scope of Work

Mechanical	<ul style="list-style-type: none">• 2x6 MW Genset Wärtsilä, Gas operated.• Complete fabrication & erection of Mechanical Equipment, Piping, Steel Structure, insulation & painting works etc.
Electrical	<ul style="list-style-type: none">• Complete electrification, including MV / LV Switchgears & Transformers, Power & Control Cabling interconnection, Lightning, Lighting protection & earthing work etc.

List of Mechanical Works Completed

Project / Client Name	Description of work	Supplier	Client/Owner	Year
• Wartsila Pakistan Ltd.	Mechanical Construction & Installation Works of 200 MW Power Plant (11x16.5 MW Engine Generator & 1x16.5 MW Steam Turbine Generator – combine cycle).	Wartsila Pakistan Ltd.	Liberty Power Tech Ltd.	2010
• Gulf Rental Power Ltd.	Mechanical Installation & Erection work of 85 MW Gulf Rental Power Plant Ltd, (2x11.5 MW Engine Generator, (3x12.5 MW Engine Generator & (2x12 MW Engine Generator at Eimnabad.	Gulf Rental Power Ltd.	Gulf Rental Power Ltd.	2009-10
• Wartsila Pakistan Ltd.	Mechanical Construction & Installation Works of 200 MW Power Plant (11x16.5 MW Engine Generator & 1x16.5 MW Steam Turbine Generator – combine cycle).	Wartsila Pakistan Ltd.	Nishat Power Ltd.	2008-09
• Pakistan Petroleum Ltd., Karachi	Construction of 6” dia Underground Feederline for Adhi-18 Well, including Riser Assembly for Tie-in and Above Ground piping works for tie-in connection at Plant-II Production Manifold at Adhi Field, Rawalpindi.	AMS-POWER	Pakistan Petroleum Ltd. Karachi	2009
• Wartsila Pakistan Ltd.	Mechanical Erection of 9x16.5MW (W18V46) Gensets & 1x16.5MW Steam Turbine Generator	Wartsila Pakistan Ltd.	Attock Generation Ltd.,	2007-08
• D.G. Khan Cement Co. Ltd, Lahore	Installation of 01 No. (16.5MW) Genset and related Equipment, along with Fabrication and Erection of Piping and Structure at DGKCC Khairpur Project, (Phase-II)	Wartsila Pakistan Ltd.,	D.G. Khan Cement Co. Ltd, Lahore	2007
• Maple Leaf Cement Factory Ltd., Lahore.	Fabrication & Erection of Pre-Filteration System before Gas Compressor.	AMS-POWER	Maple Leaf Cement Factory Ltd	2007



POWER & Industrial Engineering (Private) Limited.

Project / Client Name	Description of work	Supplier	Client/Owner	Year
• Pakistan Petroleum Ltd., Karachi	Construction / Welding / Installation of 6" dia buried Feederline and Wellhead Surface Fittings For Adhi Well-18, including Piping Work for 2 Nos. Tie-in Connections near Adhi-7 & 13 at Adhi Field, near Rawalpindi.	AMS-POWER	Pakistan Petroleum Ltd. Karachi	2007
• D.G. Khan Cement Co. Ltd, Lahore	Installation of 01 No. (16.5MW) Genset and related Equipment, along with Fabrication and Erection of Piping and Structure at DGKCC Khairpur Project, (Phase-I)	Wartsila Pakistan Ltd.,	D.G. Khan Cement Co. Ltd, Lahore	2006-07
▪ Gharibwal Cement Ltd., Lahore	Fabrication & Erection work of 2x5.9 MW Gas Power Generators and Construction of 8" dia Gas Pipe Line at Gharibwal Cement Plant.	Wartsila Pakistan Ltd.,	Gharibwal Cement Ltd	2006
▪ ICI PakistanLtd.	Mechanical Construction, Erection works of Asset Modernization & Improvement Project at ICI Polyester Fiber, Sheikhpura.	AMS-POWER	ICI Pakistan Ltd.	2006
▪ ISCOA, KSA	Supply of Manpower & Services for major overhauling of Fauji Kabirwala Power Plant.	AMS-POWER	Fauji Kabirwala Power Plant, Khanewal	2005
▪ Rafhan Maize Products Faisalabad.	Manufacturing, Fabrication and Supply of Processing Equipment.	AMS-POWER	M/s. Rafhan Maize Products , Faisalabad.	2005
▪ Pakistan Petroleum Ltd., Karachi	Construction / Welding / Installation of 6 Inch Diameter Buried Feeder Line and Well Head / Surface Fittings for Adhi Well-15 Near Daultala Town, District Rawalpindi.	AMS-POWER	Pakistan Petroleum Ltd. Karachi	2004
▪ Rafhan Maize Products, Faisalabad.	Manufacturing, Fabrication and Supply of Processing Equipment.	AMS-POWER	Rafhan Maize Products , Faisalabad.	2004
▪ Pakistan Petroleum Ltd. Karachi	Fabrication & supply of SS Level Trolls, Class 600 & 900/1500.	PPL	Pakistan Petroleum Ltd. Karachi	2003



POWER & Industrial Engineering (Private) Limited.

Project / Client Name	Description of work	Supplier	Client/Owner	Year
▪ Rafhan Maize Products, Faisalabad.	Manufacturing, Fabrication and Supply of Processing Equipment.	AMS-POWER	Rafhan Maize Products, Faisalabad.	2003
▪ CHASNUPP, RFO Project. (Shutdown work)	Removal & Re-installation of Snubbers.	CAHSNUPP	Chashma Nuclear Power Plant, Mianwali.	2002
• 44 KTPA Polyester Fibre Project.	Mechanical, Insulation and Painting Works – Processing Area.	FMM	Fayzan Manufacturing Modaraba (ICI), Lahore	2002
• Punjab Seed Corporation, Lahore.	Fabrication, Supply, Erection / Installation, Testing and Commissioning of M.S. Fumes Scrubbing Towers at Khanewal and Rahimyar Khan.	AMS-POWER	Punjab Seed Corporation, Lahore.	2001
• Ghazi-Brotha Hydro - Power Project.	Temporary Storage Facilities of Cargoes at Ghazi-Brotha Hydro-Power Project (ME-02), for 5 x 322 MW Generators.	AMS-POWER	Toshiba, M/s. Mitsui & Co. Japan	2001
• Pakistan Petroleum Ltd. Fire Water Tank Project.	Fabrication & Erection of Fire Water Tank.	AMS-POWER	Pakistan Petroleum Ltd. Karachi	2001
• Pakistan Petroleum Ltd. MDEA Plant Project.	Installation, Erection, Comm. and Utilities i.e. Pipes, Fittings, Equipment.	AMS-POWER & M/s. PRESSON U.K.	Pakistan Petroleum Ltd. Karachi	2000
• Fauji Kabirwala Power Generation Complex, Kabirwala Distt. Khanewal.	Mechanical Erection of 1 x 64 MW Steam Power Generator & 2 x 40 MW Gas Turbine Generators & Associated works of Auxiliary Equipment & Piping.	HPCC / CMIC	Fauji Kabirwala Power Complex.	1999
• Saadi Cement Limited	Installation, Erection, Comm. and Maintenance of Utilities i.e. Pipes, Fittings & Equipment including Thermax Oil Boilers, Air Compressors & Pumps.	AMS-POWER	Saadi Cement Ltd.	1999



POWER & Industrial Engineering (Private) Limited.

Project / Client Name	Description of work	Supplier	Client/Owner	Year
• Pak-American Fertilizers Limited.	Laying of 24" Dia underground Pipeline from Banian tree area to Plant site.	AMS-POWER	PAFL	1998
• Dhodak Gas Processing Project, D.G Khan.	Erection of Plant equipment, Piping, Insulation & Painting.	Clough Engg. Ltd.	Oil & Gas Development Corp	1994
• Fauji Fertilizer Expansion Project, Goth Machi.	Fabrication, Erection of Steel Structure & Painting.	Snamprogetti / Aquator	Fauji Fertilizer Corporation	1992
• Fauji Fertilizer Expansion Project, Goth Machi.	Erection of Cryogenic Tanks & other Process Tanks.	Snamprogetti / Aquator	Fauji Fertilizer Corporation	1992
• Kot Addu Gas Turbine Power Station.	Erection of Heat Tracing Piping & Insulation.	M/s. A.E.C.	WAPDA	1991
• Pakistan State Oil, Karachi	Fabrication & Erection of Water Tanks.	Pakistan State Oil	Pakistan State Oil	1991
• Bin Qasim Power Station Unit-5 (1 x 210 MW).	Erection of Steam Turbo-Generator, Auxiliaries & Piping (Fabrication & Erection) Insulation & Painting.	Hitachi / Marubeni	KESC	1991
• Bin Qasim Power Station Unit-3 & 4 (2 x 210 MW).	Erection of 2 x 680 Tons / Hrs Boilers, Auxiliaries & Piping (Fabrication & Erection) Insulation & Painting)	Deutsche Babcock Energie	KESC	1990
• Bin Qasim Power Station Unit-3 & 4 (2 x 210 MW).	Boiler Retubing at West Wharf, Karachi.	Deutsche Babcock Energie	KESC	1990
• Jamshoro Power Station Unit-2, 3, & 4 (3 x 210 MW).	Erection of Chemical Water Treatment Plant Equipment & Piping	CWEH, China	WAPDA	1989
• Jamshoro Power Station, Unit-2, 3, & 4 (3 x 210 MW).	Fabrication & Erection of Circulating Water Piping upto 2M Dia from River to Plant site.	CWEH, China	WAPDA	1989
• ICI - Power - Gen. Project (5 x 2 MW), Shiekhupura.	Erection of 5 Diesel / FOF Power Generation sets, Auxiliaries, Piping (Fabrication & Erection) Insulation & Painting.	ICI Pakistan Ltd	ICI Pakistan Ltd	1989



POWER & Industrial Engineering (Private) Limited.

Project / Client Name	Description of work	Supplier	Client/Owner	Year
• ICI - Polyester Expansion Project, Shiekhupura.	Erection of Plant Equipment, Piping & Steel Structure (Fabrication & Erection) Insulation & Painting	ICI Pakistan Ltd	ICI Pakistan Ltd	1988
• Gas Turbine Power Station, Kotri.	Design, Supply, Fabrication, Erection of 2 x 2.05 Million Liter F.O. Storage Tanks, Painting & Civil work.	AEC	WAPDA	1987
• Gas Turbine Power Station, Faisalabad.	Design, Supply, Fabrication, Erection of 2 x 2500 M Tons F.O. Storage Tanks, Painting & Civil work.	AEC	WAPDA	1987
• Kot Addu Gas Turbine Power Plant.	Design, Supply, Fabrication, Erection of 3 x 8000 M3 F.O. Storage Tanks, Painting & Civil work.	AEC	WAPDA	1986
• Kot Addu Gas Turbine Power Station.	Equipment & Piping (Fabrication & Erection) Insulation & Painting.	SICOM	WAPDA	1986
• Sui Field Gas Compression Project, Kashmore.	8" Dia 80 bars Construction of High Pressure Gas Pipeline - 12 KM countryside / underground.	Pakistan Petroleum Ltd.	Pakistan Petroleum Ltd.	1986
• Sui Field Gas Compression Project, Kashmore.	Erection of Gas Turbo-Generators, Compressors, other equipment & Piping (Fabrication & Erection) Insulation & Painting.	Foster Wheeler Energy Ltd.	Pakistan Petroleum Ltd.	1985
• Guddu Thermal Power Station, Unit-4 (210 MW) at Guddu.	Installation, Testing & Commissioning of Balance of Plant Equipment, Piping (Fabrication & Erection).	CWEH, China	WAPDA	1985
• Guddu Thermal Power Station Unit-4 (210 MW) at Guddu.	Fabrication & Erection of Circulating (Cooling) Water Piping (1100 Tons)	CWEH, China	WAPDA	1984
• Rupali Polyester Plant	Erection of Equipment, Piping & Steel Structure (Fabrication & Erection), Air Conditioning, Insulation & Painting.	Inventa, Switzerland	Rupali Polyester Ltd.	1982
• ICI Polyester Project, Sheikhpura.	Erection of Polymer Plant & Allied Equipment, Piping & Steel Structure (Fabrication & Erection), Insulation & Painting.	ICI Pakistan Ltd.	ICI Pakistan Ltd.	1982



POWER & Industrial Engineering (Private) Limited.

Project / Client Name	Description of work	Supplier	Client/Owner	Year
• Pattoki Sugar Mills.	Erection of Mill House Cane Carrier & Allied Equipment.	Heavy Mechanical Complex, Texila	Punjab Industrial Development Board	1982
• POF Project, Havelian.	Erection of Complete Plant Equipment, Piping & Steel Structure.	Pakistan Ordinance Factory	Pakistan Ordinance Factory	1981
• Kamalia Sugar Mills Ltd., Kamalia.	Complete Mechanical Installations, lagging/insulation & commissioning work.	Tate & Lyle U.K	Punjab Industrial Development Board.	1980
• Pakarab Fertilizer Project, Multan.	Erection of 3 x 85 Tons Boilers, 3 x 9 MW Turbo-generators, allied Auxiliaries, Piping (Fabrication & Erection)	BBC - Borsig Germany	Pakarab Fertilizer Ltd.	1978
• Pakarab Fertilizer Project, Multan.	Erection of CS, SS and Alloy Steel Piping of Nitrophosphate, Calcium Nitrate & Calcium Aluminum Nitrate Plants.	Inventa, Switzerland	Pakarab Fertilizer Ltd.	1978
• Pakarab Fertilizer Project, Multan.	Erection of Effluent Treatment Plant, CS & SS Piping.	Inventa, Switzerland	Pakarab Fertilizer Ltd.	1976
• MW Gas Turbine Power Plant, Faisalabad.	Erection of 8 x 25 MW Gas Turbine & Generators, Allied Equipment & Piping.	AEG - KANIS Germany	WAPDA	1975
• Pakistan Broad - casting Power Plant, Rawat.	Erection of 500 KVA & 1000 KVA Diesel Power Generators, Allied Equipment & Piping.	DUETZ, Germany	Pakistan Broad - casting Corporation	1974
• Associated Cement Wah/Rohri.	Dismantling & re-erection of 300,000 gallons oil storage tanks.	Associated Cement	Associated Cement	1973
• Leiah Sugar Mills Plant.	Erection of 1.6 MW Turbo-generator Auxiliaries, 3 Roller Mills & Piping.	Hirozoki, Japan	Thall Industries Corporation	1972



POWER & Industrial Engineering (Private) Limited.

Project / Client Name	Description of work	Supplier	Client/Owner	Year
• 110 MW Ghorasal Thermal Power Plant, Dacca.	Erection of 2 x 55 MW Turbo-generators & Auxiliaries, Piping (Fabrication & Erection) Chemical Water Treatment Plant, Oil & Fuel Oil Facilities, Air-Conditioning & Duct Fabrication.	Techno Promexport, USSR	WAPDA, Dacca	1971
• MW Ghorasal Thermal Power Station, Dacca	Erection Electrolyzer, H2 Generating Plant & Piping Workshop Equipment.	Techno - Promexport, USSR	WAPDA, Dacca	1969
• MW Ghorasal Thermal Power Station, Dacca.	Fabrication & Erection of Main Building's Steel Structure (1300 Tons)	Tecgbi Promexport, USSR	WAPDA, Dacca	1969
• MW Ghorasal Thermal Power Station, Dacca.	Erection of 50 Tons Capacity Rotar Tower Crane	Techno Promexport USSR	WAPDA, Dacca	1969
• Karnaphuli Paper Mills, Chittagong.	Installation of 19 MW Double Extraction Turbo-Generator, Auxiliaries & Piping.	Mitsubishi, Japan	Karnaphuli Paper Mills	1967

List of Electrical Works Completed

Project	Description of work	Supplier	Client/Owner	Year
• Wartsila Pakistan Ltd.	Supply, Delivery, Erection and Installation of Electrical work for Lucky Cement 3x12v50DF Conversion Project.	Wartsila Pakistan Ltd.	Lucky Cement, D.I.Khan	2008-10
• Wartsila Pakistan Ltd.	Electrical Construction & Installation works for Attock Gen Limited Power Plant (IPP) (159.8 MW) Combined Cycle Wartsila 4-stroke Diesel Reciprocating Engines at Morgah, Rawalpindi.	Wartsila Pakistan Ltd.	Attock Generation Ltd.,	2007-08
• D.G. Khan Cement Co. Ltd, Lahore	Electrical & Instrumentation installations of 02 Nos. (16.5MW) Genset at DGKCC Khairpur Project, (Phase-I & II)	Wartsila Pakistan Ltd.,	D.G. Khan Cement Co. Ltd, Lahore	2006-07
• Wartsila Pakistan Ltd., Lahore.	Installation of Electrical Scope of Work at Nestle, Kabirwala.	Wartsila Pakistan Ltd.,	Nestle, Kabirwala	2006-07
▪ Gharibwal Cement Ltd., Lahore	Electrical & Instrumentation Erection / Installation & Commissioning Work of New Power Plant Project at Gharibwal Cement.	Wartsila Pakistan Ltd.,	Gharibwal Cement Ltd	2006
▪ Fauji Kabirwala Power Complex. (Shutdown work)	Maintenance of Electrical Equipment.	AMS-Power	Fauji Kabirwala Power Complex.	2005
▪ Fauji Kabirwala Power Complex. (Shutdown work)	Maintenance of Electrical Equipment.	AMS-Power	Fauji Kabirwala Power Complex.	2004
▪ Fauji Kabirwala Power Complex. (Shutdown work)	Maintenance of Electrical Equipment.	AMS-Power	Fauji Kabirwala Power Complex.	2003



POWER & Industrial Engineering (Private) Limited.

Project	Description of work	Supplier	Client/Owner	Year
▪ CHASNUPP,RFO Project. (Shutdown work)	Maintenance Services for Electrical Motors, Motorized Valves Actuators, DC Panels and Batteries.	AMS-Power	Chashma Nuclear Power Plant, Mianwali.	2002
• PPL MDEA Plant Project.	Installation of H.T. & L.T. Overhead Line, Transformers, Power Control Cabling, Earthing System, Testing & Commissioning of the MDEA Plant.	AMS-Power	Pakistan Petroleum Ltd. Karachi	2000
• Fauji Kabirwala Power Project.	Electrical Installation of 150 MW Combined Cycle Power Plant including Power & Control Panels & Cabling and Earthing.	Westinghouse	HPCC / CMIC	1999
• Fauji Fertilizer Expansion.	Plant Equipment Installation H.T & L.T Switchgears, Station Transformers, Protection & Metering System, Power Control Cabling & Earthing System and Testing/Commissioning.	Snamprogetti / Aquater	Fauji Fertilizer Corporation	1992
• Kot Addu Gas Turbine Power Station.	Control Cabling & lighting.	AEC	WAPDA	1991
• ICI – Power - Gen Project, (5 x 2 MW) Shiekhpura	Installation, Testing & Commissioning of Equipment i.e. H.T & L.T Switchgears, Transformers, Control Panels / Desks, Protection & Metering System, Power & Control Cabling and Earthing Network.	ICI Pakistan Ltd.	ICI Pakistan Ltd.	1989
• 3 x 132 / 6.6 KV Grid Stations at Hala, Shadadpur & Tandoadam.	Installation, Testing & Commissioning of 30/33 MVA Power Transformers, Switchgears, Control Panels, Air Blast Circuit Breakers, Lightning Arrestors, Protection & Metering System, Overhead Bus Bars, Power & Control Cables & Earthing Network.	WAPDA	WAPDA	1988

Project	Description of work	Supplier	Client/Owner	Year
<ul style="list-style-type: none"> Guddu Thermal Power Station Unit - 4 (210 MW) at Guddu. 	Installation, Testing & Commissioning of whole Plant Equipment i.e. Generator, Bus Ducts, Power, Auxiliary & Station Transformers, H.T & L.T Switchgears, Motor Control Centres, Protection & Metering System Control Panels / Desks Power & Control Cabling and Earthing Network.	CWEH, China	WAPDA	1985
<ul style="list-style-type: none"> D.G. Khan Cement Project. 	Installation of whole Plant Equipment H.T & L.T Switchgears, Transformers, Motor Control Centres, Protection & Metering System, Control Panels/ Desks Internal & External Lighting Protection & Earthing Network.	UBE, Japan	State Cement Corporation of Pakistan	1986
<ul style="list-style-type: none"> Pakland Cement Project 	Installation of Complete Plant Equipment H.T & L.T Switchgears, Transformers, Control Panels / Desk, Protection & Metering System, Power & Control Cabling, Lightning Protection & Earthing Network.	France	Pakland Cement Ltd.	1984
<ul style="list-style-type: none"> D.G. Khan Cement Project 132 / 6.6 KV Grid Station. 	Erection of Complete Grid Station Equipment, Overhead Bus, 10/13 MVA Power Transformer, Control Panels, Air Blast Circuit Breakers, Isolators, Power & Control Cabling, Lighting Protection & Earthing Network.	D.G Khan Cement	State Cement Corporation of Pakistan	1986
<ul style="list-style-type: none"> Pakistan Steel, Karachi 	Complete Erection, Installation of Communication & Signaling works of various complexes of main plant for Hot Metal Stage Phase - II.	Russia	Pakistan Steel, Karachi	1982
<ul style="list-style-type: none"> Kamalia Sugar Mills Plant. 	Complete Plant Electrification, Switchgears, Power Generators, Protection & Metering System, Control Panels, Power & Control Cabling & Earthing Network.	Tate & Lyle U.K	Punjab Industrial Development Board.	1980

Project	Description of work	Supplier	Client/Owner	Year
<ul style="list-style-type: none"> Pakarab Fertilizer, Multan. 	Complete Electrical work of 3 x 9 MW Turbo generators, 3 x 85 ton/hrs Boilers, WTP including H.T & L.T Switchgears, Transformers, Power & Control Cabling and Earthing Network. Effluent Treatment Plant Power & Control Electrification work.	BBC - Borsig Germany	Pakarab Fertilizers Ltd.	1977
<ul style="list-style-type: none"> 200 MW Gas Turbine Power Generators, Faisalabad. 	Installation of 8 x 25 MW Turbine & Control & Generator Packages, Protection & Metering System Power & Control Cabling & Earthing Network.	AEG - KANIS	WAPDA	1975
<ul style="list-style-type: none"> Shakarganj Mills Power Plant, Jhang. 	Complete Electrical works of 2 x 2MW Turbo-Generators Switchgears, Protection & Metering System Control Panels, Power & Control Cabling.	Stork Werkspoor, Holland	Shakarganj, Mills	1973
<ul style="list-style-type: none"> Leiah Sugar Mills, Leiah. 	Complete Electrical Works of 1.6 KV Turbo-generator & 3 Roller Mills, Switchgears, Protection & Metering System Power & Control Cabling & Earthing.	Hiro-Shinki	Thal Industries Corporation	1972
<ul style="list-style-type: none"> 110 MW Ghorasal Thermal Power Station, Dacca. 	Installation of 2 x 55 MW Turbo-generators, Power Transformers 11/132 KV & Station Auxiliary Transformers Switchgears Metering & Protection System, Power & Control Cabling, Switchyard Bus Bars, & Earthing Network.	Techno - Promexport Russia	WAPDA, Dacca	1971
<ul style="list-style-type: none"> MW Power Plant at Karnaphuli Paper Mills, Chitagong. 	Installation of Electrical Equipment H.T/ L.T Switchgears, Protection & Metering System, Power & Control Cabling.	Mitsubishi, Japan	Karnaphuli Paper Mills	1967

List of Instrumentation Works Completed

Project	Description of work	Supplier	Client/Owner	Year
• D.G. Khan Cement Co. Ltd, Lahore	Electrical & Instrumentation installations of 01 No. (16.5MW) Genset at DGKCC Khairpur Project, (Phase-I & II)	Wartsila Pakistan Ltd.,	D.G. Khan Cement Co. Ltd, Lahore	2006-07
▪ Gharibwal Cement Ltd., Lahore	Electrical & Instrumentation Erection / Installation & Commissioning Work of New Power Plant Project at Gharibwal Cement.	AMS-Power	Gharibwal Cement Ltd	2006
• PPL Instrumentation of Dehydration Plant project.	Servicing / Calibration of Instruments of Dehydration Plant at Process Facilities - Block 20, Distt. Shikarpur (SIND).	Pakistan Petroleum Ltd.	Pakistan Petroleum Ltd. Karachi	2000
• Fauji Kabirwala Power Project.	Instrumentation work of 2 x 44 MW Gas Turbines & 1 x 64 MW Steam Turbine and their Auxiliaries.	Westinghouse	HPCC / CMIC	1998
• ICI Polyester Expansion Project, Sheikhpura.	Complete Plant Instrumentation in Field & Control Room, Field Hook-ups, Control Panels, Control & Signal Cabling, Calibration & Loop Testing.	ICI Pakistan Ltd.	ICI Pakistan Ltd.	1989
• Guddu Thermal Power Station, Unit – 4 (210 MW) at Guddu.	Complete Plant Instrumentation in Field & Control Room, Field Hook-ups, Control Panels, Control & Signal Cabling, Calibration.	CWEH, China	WAPDA	1985
• D.G Khan Cement Plant, D.G Khan	Complete Plant Instrumentation in Field & Control Room, Field Hook-ups, Control Panels / Desks Control & Signal Cabling, Calibration & Loop Checking.	UBE, Japan	State Cement Corporation of Pakistan	1985
• Pakland Cement Plant, Karachi.	Complete Plant Instrumentation in Field & Control Room, Field Hook-ups, Control Panels / Desks, Control & Signal Cabling, Calibration & Loop Checking.	France	State Cement Corporation of Pakistan	1984

Project	Description of work	Supplier	Client/Owner	Year
• ICI Polyester Project, Sheikhpura.	Complete Plant Instrumentation in Field & Control Room, Field Hook-ups, Control Panels / Desks, Control & Signal Cabling, Calibration & Loop Checking.	ICI Pakistan Ltd.	ICI Pakistan Ltd.	1982
• Pakistan Karachi.	Steel, Installation & Commissioning of Communication & Signaling works of various complex of Main Plant for Hot Metal Storage, Phase – II.	Russia	Pakistan Steel	1982
• Pakistan Karachi.	Steel, Installation & Commissioning Task of Automation & Control of Raw Material Preparation Plant Complex.	Russia	Pakistan Steel	1980
• Pakistan Karachi.	Steel, Installation & Commissioning of Task of Automation & Control of 2 x 55 MW Thermal Power Plant & 3 x 8 MW Turbo-Blower Station.	Techno - Promexport Russia	Pakistan Steel	1981
• Kamalia Sugar Mills.	Complete Plant Instrumentation, Control & Signal Cabling and for 2 x 40 Tons/Hrs Boilers.	Tate Tyle U.K	Punjab Industrial Development Board	1981
• Pakarab Fertilizer Project, Multan.	Complete Instrumentation of 3 x 85 Tons/Hrs Boilers & 3 x 9 MW Turbo-generators	BBC Borsig	Pakarab Fertilizer Ltd.	1977
• 200 MW Gas Turbine Generators, Faisalabad.	Complete Instrumentation of 8 x 25 MW Power Generating sets, Gas and Fuel Oil Systems.	AEG, KANIS	WAPDA	1975
• Leiah Sugar Mills, Leiah.	Instrumentation of 2 x 1.6 MW Turbo-Generators.	Hirozoki, Japan	Thal Industries Corporation	1972
• 110 MW Ghorasal Thermal Power Station, Dacca.	Complete Instrumentation of 2 x 55 MW Turbo-generators, Water Treatment Plant, Fuel Oil Facilities & other Auxiliaries of Turbo-generator sets & Plant Auxiliaries.	Techno - Promexport Russia	WAPDA Dacca	1967



Detailed Scope of Work

Scope of Work - Major Projects Executed

Name of Projects	Steel Structure	Mech. Equip't	Piping	Insulation	Tanks/Vessels	Painting	HVAC	Electrical	Instrumentation
<ul style="list-style-type: none"> Wartsila Pakistan Ltd., Mechanical Construction & Installation Works of 200 MW Power Plant (11x16.5 MW Engine Generator & 1x16.5 MW Steam Turbine Generator – combine cycle). Liberty Power Tech Ltd., (LPTL). 	X	X	X	X		X	X		
<ul style="list-style-type: none"> Gulf Rental Power Ltd., Mechanical Installation & Erection work of 85 MW Gulf Rental Power Plant Ltd, (2x11.5 MW Engine Generator, (3x12.5 MW Engine Generator & (2x12 MW Engine Generator at Eimnabad. 	X	X	X	X		X			
<ul style="list-style-type: none"> Wartsila Pakistan Ltd., Mechanical Construction & Installation Works of 200 MW Power Plant (11x16.5 MW Engine Generator & 1x16.5 MW Steam Turbine Generator – combine cycle). Nishat Power Ltd., (NPL). 	X	X	X	X		X	X		



POWER & Industrial Engineering (Private) Limited.

Name of Projects	Steel Structure	Mech. Equip't	Piping	Insulation	Tanks/Vessels	Painting	HVAC	Electrical	Instrumentation
<ul style="list-style-type: none"> Construction of 6" dia Underground Feederline for Adhi-18 Well, including Riser Assembly for Tie-in and Above Ground piping works for tie-in connection at Plant-II Production Manifold at Adhi Field, Rawalpindi. 			X			X			
<ul style="list-style-type: none"> Wartsila Pakistan Ltd., Supply, Delivery, Erection and Installation of Electrical work for Lucky Cement 3x12v50DF Conversion Project. 								X	
<ul style="list-style-type: none"> Wartsila Pakistan Ltd., Electrical Construction & Installation works & Mechanical Erection of 9-x16.5MW Gensets & 1x16.5 Steam Turbine for Attock Gen Limited (AGL) 159.8 MW Power Plant at Morgah, Rawalpindi 		X		X			X	X	X
<ul style="list-style-type: none"> D.G. Khan Cement Co. Ltd., Installation of 01 No. (16.5MW) Genset and related Equipment, along with Fabrication and Erection of Piping and Structure at DGKCC Khairpur Project, (Phase-II) 	X	X	X	X	X	X		X	X



POWER & Industrial Engineering (Private) Limited.

Name of Projects	Steel Structure	Mech. Equip't	Piping	Insulation	Tanks/Vessels	Painting	HVAC	Electrical	Instrumentation
<ul style="list-style-type: none"> Maple Leaf Cement Factory Ltd., Fabrication & Erection of Pre-Filtration System before Gas Compressor 		X	X		X	X			
<ul style="list-style-type: none"> Pakistan Petroleum Ltd., Construction / Welding / Installation of 6" dia buried Feeder line and Wellhead Surface Fittings For Adhi Well-18, including Piping Work for 2 Nos. Tie-in Connections near Adhi-7 & 13 at Adhi Field, near Rawalpindi. 			X			X			
<ul style="list-style-type: none"> D.G. Khan Cement Co. Ltd., Installation of 01 No. (16.5MW) Genset and related Equipment, along with Fabrication and Erection of Piping and Structure at DGKCC Khairpur Project, (Phase-I) 	X	X	X	X	X	X		X	X
<ul style="list-style-type: none"> M/s. Wartsila Pakistan Ltd., Fabrication & erection of Wartsila 16v32 engine, Electrical Scope of Work and Installation of Overhead Crane at Nestle, Kabirwala. 	X	X	X		X			X	



POWER & Industrial Engineering (Private) Limited.

Name of Projects	Steel Structure	Mech. Equip't	Piping	Insulation	Tanks/Vessels	Painting	HVAC	Electrical	Instrumentation
<ul style="list-style-type: none">Gharibwal Cement Ltd., Fabrication & Erection work of 2x5.9 MW Gas Power Generators and Construction of 8" dia Gas Pipe Line at Gharibwal Cement Plant.	X	X	X		X			X	X
<ul style="list-style-type: none">ICI Pakistan Ltd., Mechanical Construction, Erection works of AMIP Polyester Fiber, Sheikhpura.	X	X	X	X		X	X		
<ul style="list-style-type: none">Rafhan Maize Products, Faisalabad. Manufacturing and Supply of Equipment.		X			X	X			
<ul style="list-style-type: none">Pakistan Petroleum Ltd., Construction / Installation of 6" dia Buried Feeder Line and Well head surface fittings for Adhi Well 15 at Adhi Plant.			X			X			
<ul style="list-style-type: none">Rafhan Maize Products, Faisalabad. Manufacturing and Supply of Equipment		X			X	X			
<ul style="list-style-type: none">Pakistan Petroleum Ltd. Fabrication & supply of SS Level Trolls.		X	X						



POWER & Industrial Engineering (Private) Limited.

Name of Projects	Steel Structure	Mech. Equip't	Piping	Insulation	Tanks/Vessels	Painting	HVAC	Electrical	Instrumentation
• Rafhan Maize Products, Faisalabad. Manufacturing and Supply of Equipment		X			X	X			
• Fauji Kabirwala Power Complex, Khanewal. Supply of Manpower for Electrical & Mechanical works.		X						X	
• CHASNUPP, Mianwali, Maintenance of Electrical Equipment, (RFO-1).								X	
• CHASNUPP, Mianwali, Removal & reinstallation of Snubbers, (RFO-1).		X							
• Pakistan Petroleum Ltd., Construction of HP and LP Oil and Gas Lines for Installation of early Production facility for Adhi Well 13 at Adhi Plant.			X			X			
• Sitara Chemicals Industries, Faisalabad.	X		X						
• Fayzan Manufacturing Modaraba (ICI), Lahore. 44 KTPA Polyester Fibre Project.	X	X	X	X		X			



POWER & Industrial Engineering (Private) Limited.

Name of Projects	Steel Structure	Mech. Equip't	Piping	Insulation	Tanks/Vessels	Painting	HVAC	Electrical	Instrumentation
<ul style="list-style-type: none"> Punjab Seed Corporation, Fabrication, erection / installation, testing and commissioning of M.S. Fumes Scrubbing Towers. 	X	X	X	X	X	X			
<ul style="list-style-type: none"> Pakistan Petroleum Ltd., Construction of Fire Water Tank at Process Facilities – Block 22, Shikarpur. 			X	X	X				
<ul style="list-style-type: none"> Pakistan Petroleum Ltd. Installation of MDEA Plant & Auxiliary Equipment at Process Facilities – Block 22, Shikarpur. 	X	X	X			X		X	X
<ul style="list-style-type: none"> Pakistan Petroleum Ltd., Servicing / Calibration of Instruments of Dehydration Plant at Process Facilities. 									X
<ul style="list-style-type: none"> WAPDA Ghazi Brotha 5 x 322 MW Hydro Power Project, Construction of Temporary Storage Facilities 	X					X		X	



POWER & Industrial Engineering (Private) Limited.

Name of Projects	Steel Structure	Mech. Equip't	Piping	Insulation	Tanks/Vessels	Painting	HVAC	Electrical	Instrumentation
• Fauji Kabirwala Power Generation Complex, Kabirwala Distt. Khanewal.		X	X	X				X	X
• Pak-American Fertilizers Limited.			X						
• Dhodak Gas, Field-Gas Processing Plant	X	X	X	X		X			
• Sui Field Gas Compression Station	X	X	X	X		X			
• 3 x 210 MW Bin Qasim Thermal Power Station. Units - 3, 4 & 5	X	X	X	X	X	X			
• 1 x 210 MW Guddu Thermal Power Station. Unit - 4.	X	X	X	X	X		X	X	X
• 3 x 210 MW Jamshoro Thermal Power Station, Units 2, 3, & 4.	X	X	X	X	X	X			
• 2 x 55 MW Ghorasal Thermal Power Station, Dacca	X	X	X	X	X	X	X		X
• 8 x 25 MW Gas Turbine Power Plant Faisalabad.	X	X	X	X	X	X			X
• 4 x 12.5 MW Thermal Power Station, Sukhar.	X	X	X	X	X	X	X	X	X
• 1 x 19 MW Karnaphuli Paper Mills, Chittagong.		X	X	X					

Name of Projects	Steel Structure	Mech. Equip't	Piping	Insulation	Tanks/Vessels	Painting	HVAC	Electrical	Instrumentation
• 1 x 15 MW Thermal Power Station, Hyderabad.	X	X	X	X	X	X	X	X	X
• Pakarab Fertilizer Project, Multan.	X	X	X	X	X		X	X	
• 4 x 100 MW Gas Turbine Power Station Kotaddu		X	X	X	X	X		X	
• ICI – Power Generation Project.	X	X	X	X	X	X	X	X	X
• Shakarganj Sugar Mills, Jhang.		X	X						X
• 3 x 132 KV Grid Stations at Hala, Shahdadpur & Tandoadam.	X							X	
• ICI-Polyester Project Sheikhupura	X	X	X	X	X	X	X	X	X
• Rupali Polyester Project, Sheikhupura	X	X	X	X	X	X	X		
• Fauji Fertilizers, Goth Machi.	X				X				X
• Pakland Cement Ltd. Karachi								X	X
• D.G Khan Cement Co. Ltd, Plant & 132/6.6 KVA Grid Station.								X	X
• Pattoki Sugar Mills Pattoki	X	X	X	X					



POWER & Industrial Engineering (Private) Limited.

Name of Projects	Steel Structure	Mech. Equip't	Piping	Insulation	Tanks/Vessels	Painting	HVAC	Electrical	Instrumentation
• Kamalia Sugar Mills Limited - Kamalia	X	X	X	X	X	X	X	X	X
• Leiah Sugar Mills - Leiah.		X	X	X				X	X
• Pakistan Ordnance Factories Havelian	X	X	X	X			X		